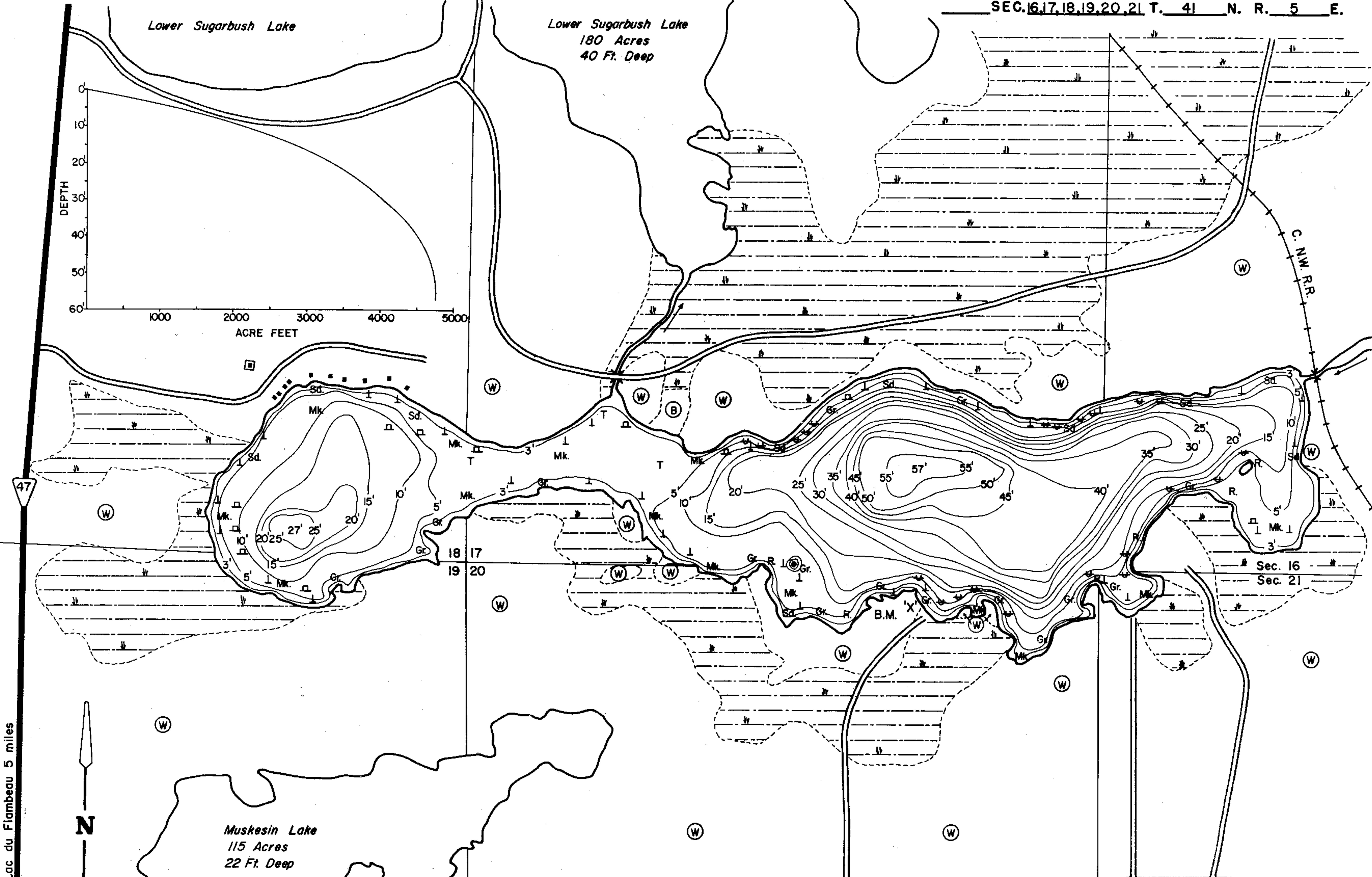
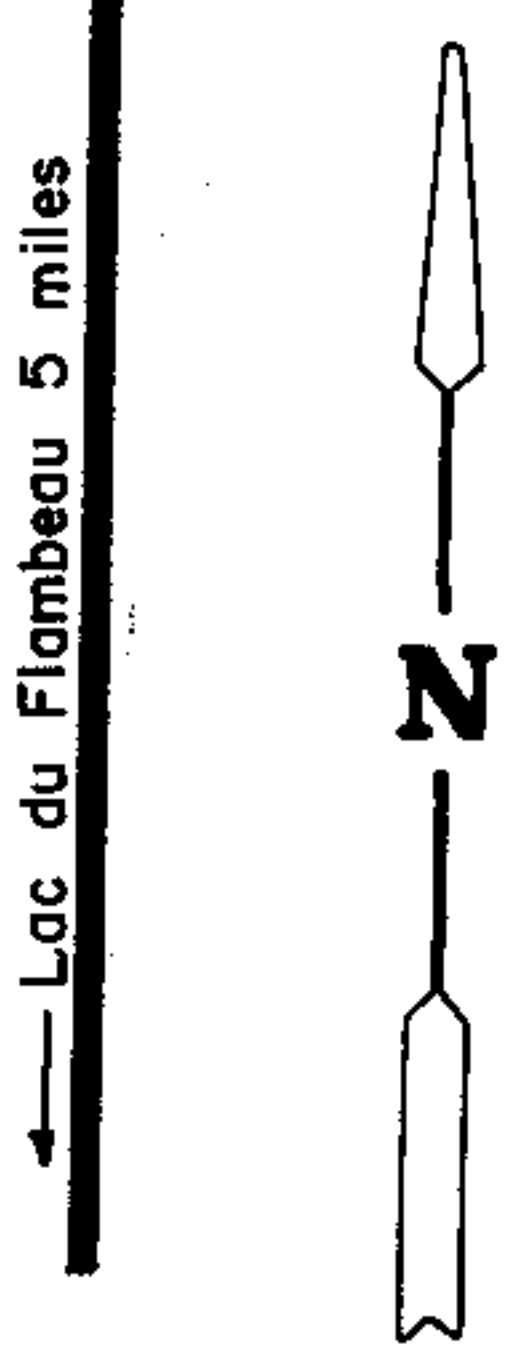


LAKE SURVEY MAP



Lac du Flambeau 5 miles



EQUIPMENT RECORDING SONAR MAPPED JUNE 1968
MONTH YEAR

- | TOPOGRAPHIC SYMBOLS | | LAKE BOTTOM SYMBOLS | |
|-----------------------|-------------------------------|---------------------|-----------------------------|
| (B) Brush | Steep slope | P. Peat | B Boulders |
| (PW) Partially wooded | ----- Indefinite shoreline | Mk. Muck | ⊙ Stumps & Snags |
| (W) Wooded | ----- Marsh | C. Clay | ⊙ Rock danger to navigation |
| (C) Cleared | o Spring | M. Marl | T Submergent vegetation |
| (P) Pastured | ----- Intermittent stream | Sd. Sand | ⊥ Emergent vegetation |
| (A) Agricultural | ===== Permanent inlet | Sl. Silt | ⊥ Floating vegetation |
| B.M. Bench Mark | ===== Permanent outlet | Gr. Gravel | ⊥ Brush shelters |
| ■ Dwelling | ===== Dam | R. Rubble | |
| □ Resort | ----- D.N.R. State owned land | Bc. Bedrock | |
| ⊠ Camp | | | |

B.M. 'X' 1404 Top of railroad spike extending 1" out of cluster of 4 maple trees 16" at base, 17' S.W. of center of boat landing, 5' S. of twin 8" birch, 9' S. of waters edge
Assumed elevation 100.00'
Water level 95.72'



◆ Access ◆ Access with Parking ◆ Boat Livery

Drawn by: C. Holt
Field work by: P. Michelson, J. Smith

SPECIES OF FISH	Abundance		
	Abundant	Common	Present
Muskie		X	X
N. Pike		X	X
Walleye		X	X
L.M. Bass		X	X
S.M. Bass		X	X
Panfish	X		
Trout			

WATER AREA 269.2 ACRES
 UNDER 3 FT. 8.3 %
 OVER 20 FT. 34.8 %
 MAX. DEPTH 57 FEET.
 TOTAL ALK. 50 P.P.M.
 VOLUME 4761 ACRE FT.
 SHORELINE 5.0 MILES

Source: Wisconsin Department of Natural Resources 608-266-2621
Middle Sugarbush Lake - Vilas County, Wisconsin DNR Lake Map
Date – Jun 1968 - Historical Lake Map - Not for Navigation
A Public Document - Please Identify the Source when using it.